



Installatie Procedure ADSL Wifi.

Om gebruik te maken van het wireless modem zijn de minimale systeem eisen:

- Laptop met wifi adapter of WIFI USB-stick.
- PC met Wireless netwerkkaart of WIFI USB-stick.

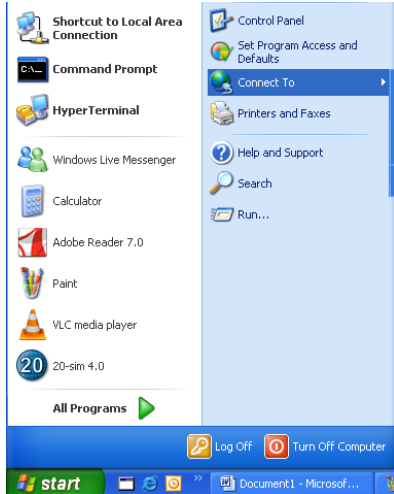
Eisen adapter/kaart

- Standard IEEE 802.11g, backward compatible with 802.11b
- Wifi kaart die WPA-PSK ondersteunt.
- Wifi kaart die 64 en 128 bit encryptie ondersteunt.

De benodigde installatie handleidingen voor XP en VISTA vindt u hier onder:

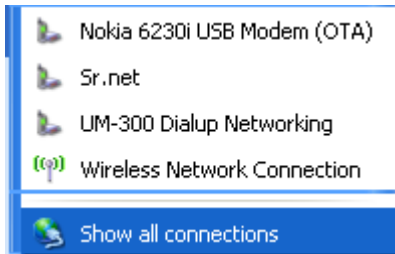
Windows XP

Stap1 Klik op start dan naar **connect** to



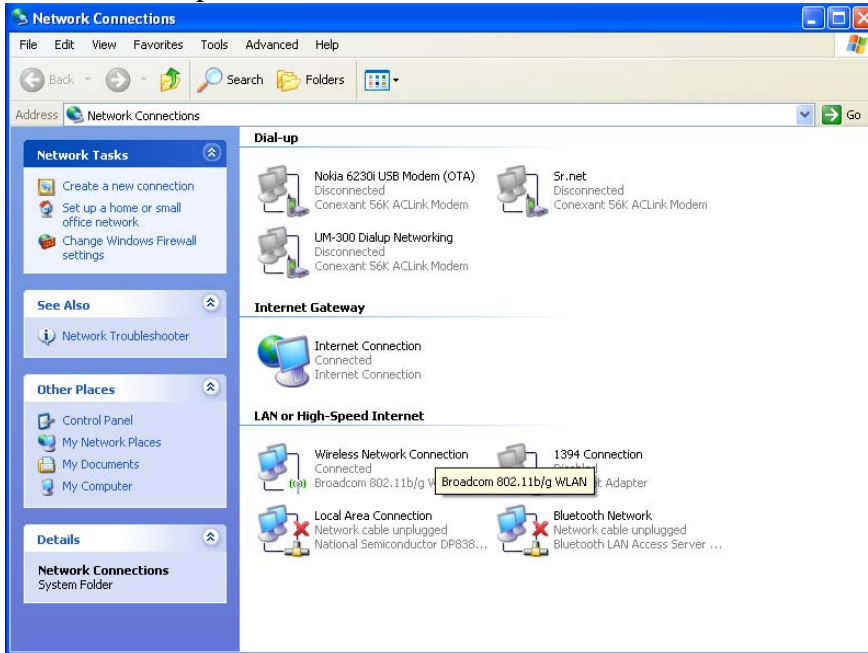
Stap 2

Selecteer **Show all connections**



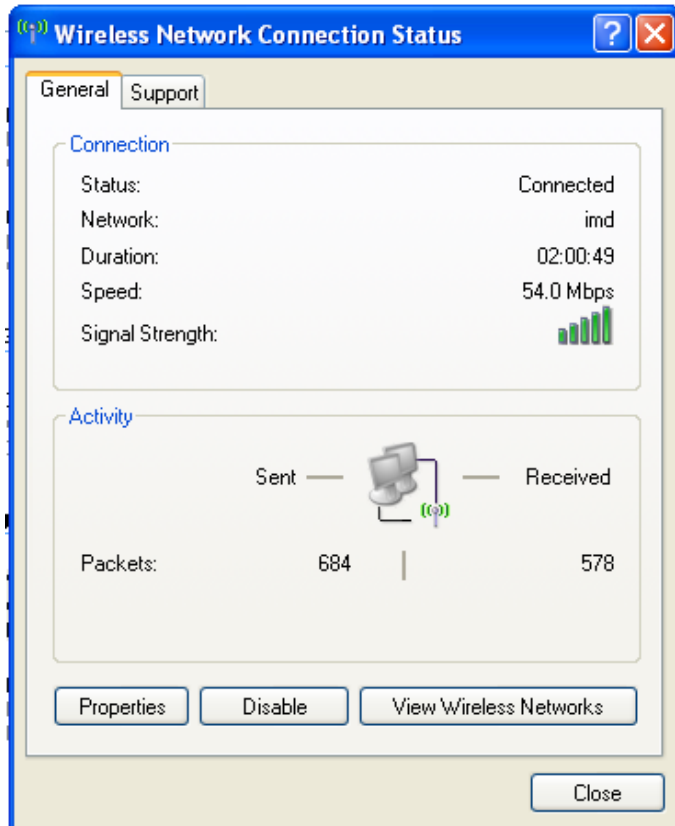
Step 3

Dubbele klik op **Wireless Network Connection**



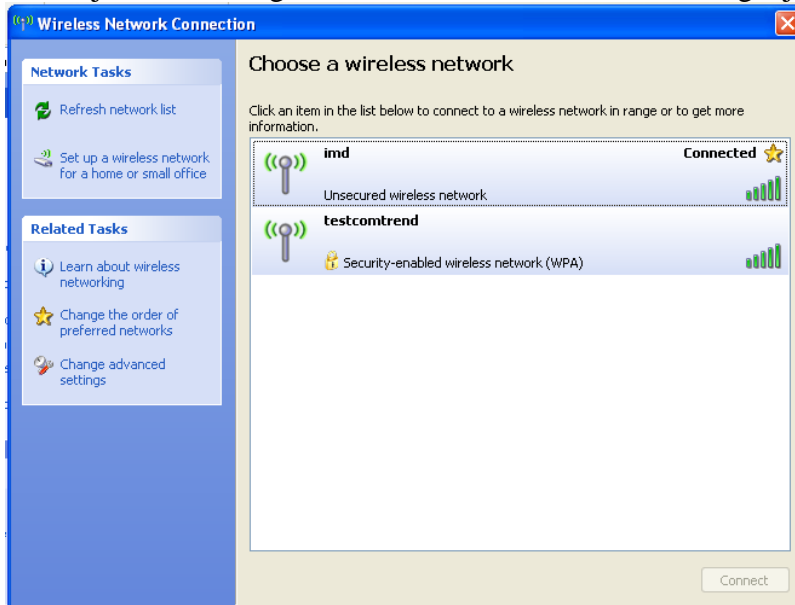
Step4

Klik op **View Wireless Networks**

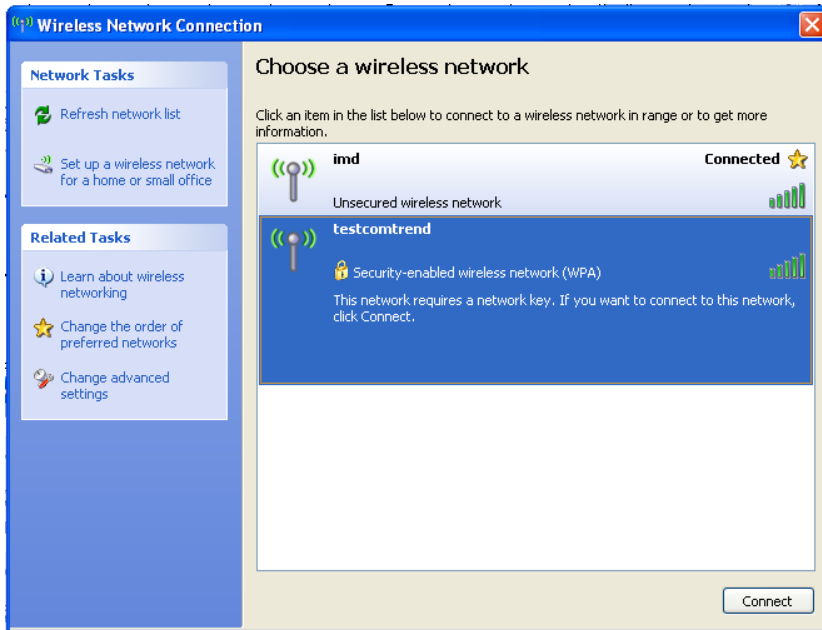


Step 5

Hier zijn de aanwezige wifi connecties die ter beschikking zijn.

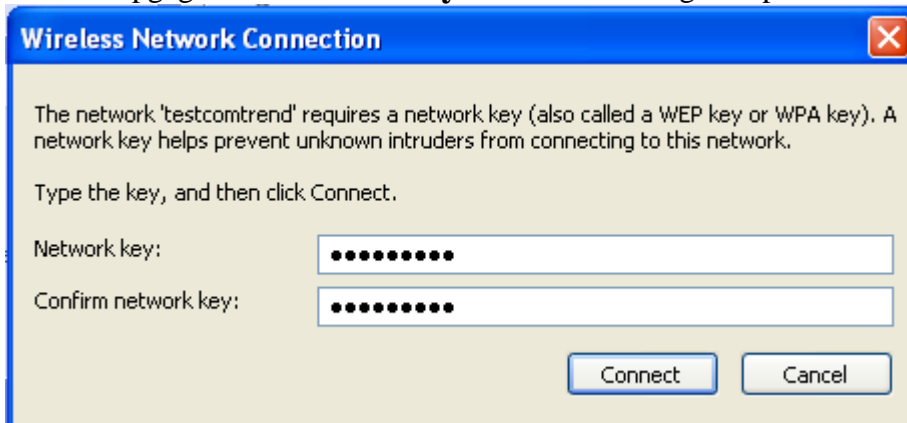


Klik op de opgegeven **SSID** in dit geval is het testcomtrend.
Klik vervolgens op **Connect**.

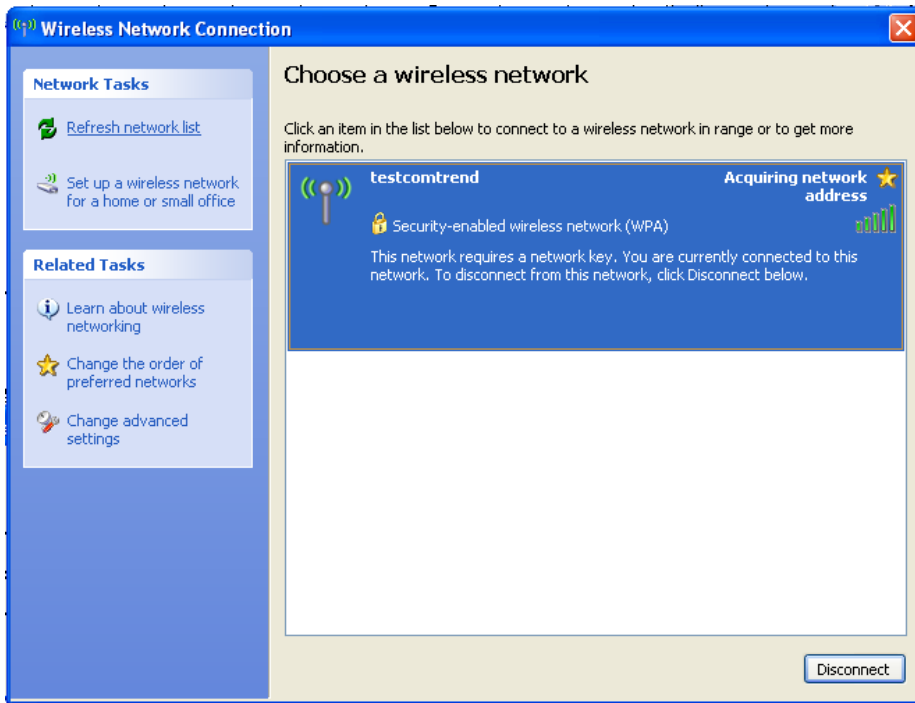


Step 6

Voer de opgegeven **network key** in en klik vervolgens op **Connect**

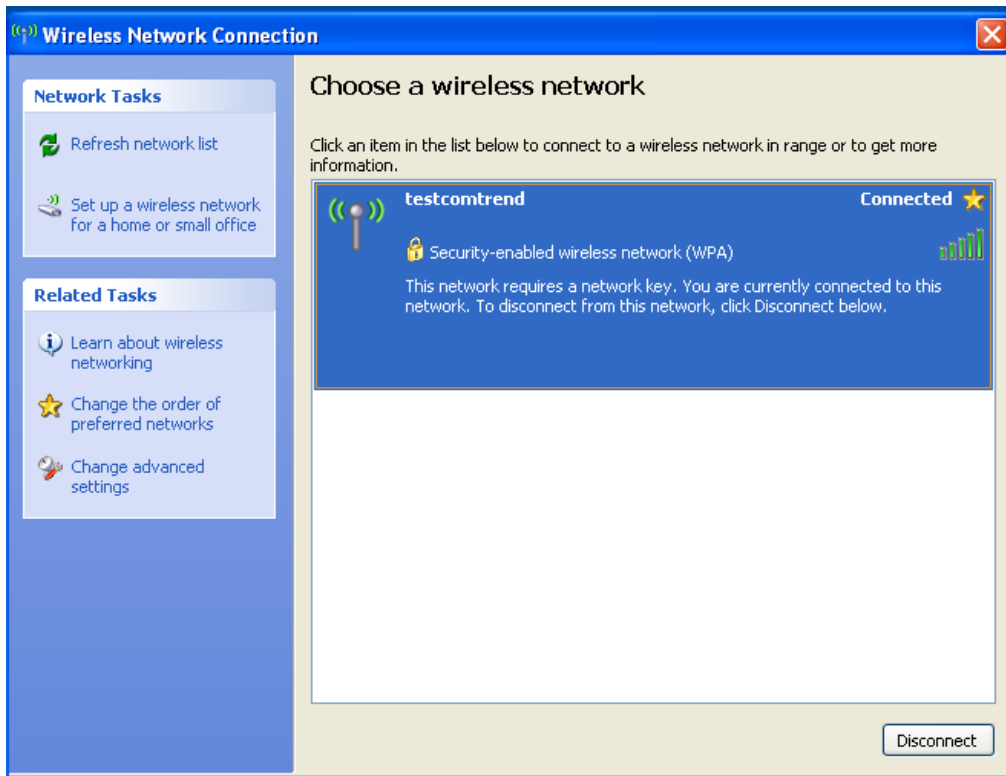


De modem zal nu een ip adres toe kennen aan uw pc



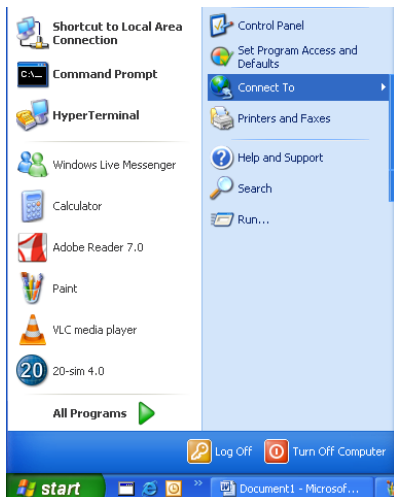
Stap7

Uw pc heeft nu connectie met de modem.



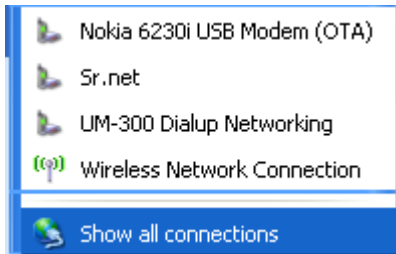
DNS settings

Step 1 Klik op start dan naar **connect** to



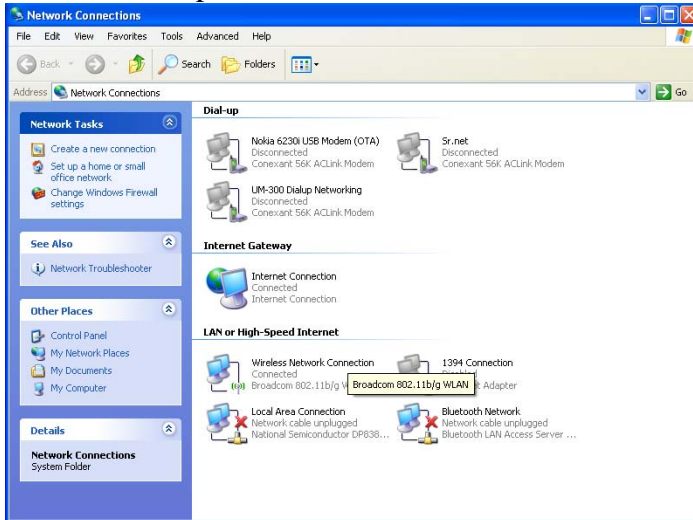
Step 2

Selecteer **Show all connections**



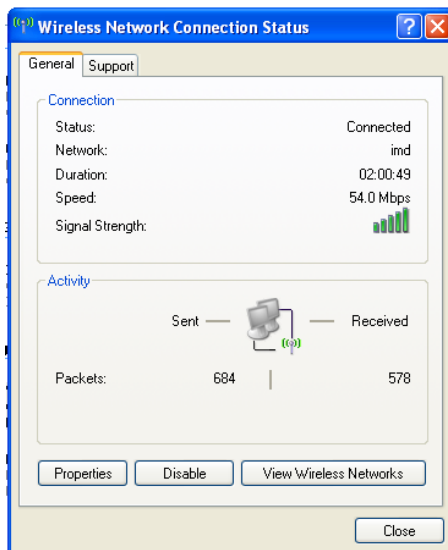
Step 3

Dubbele klik op **Wireless Network Connection**



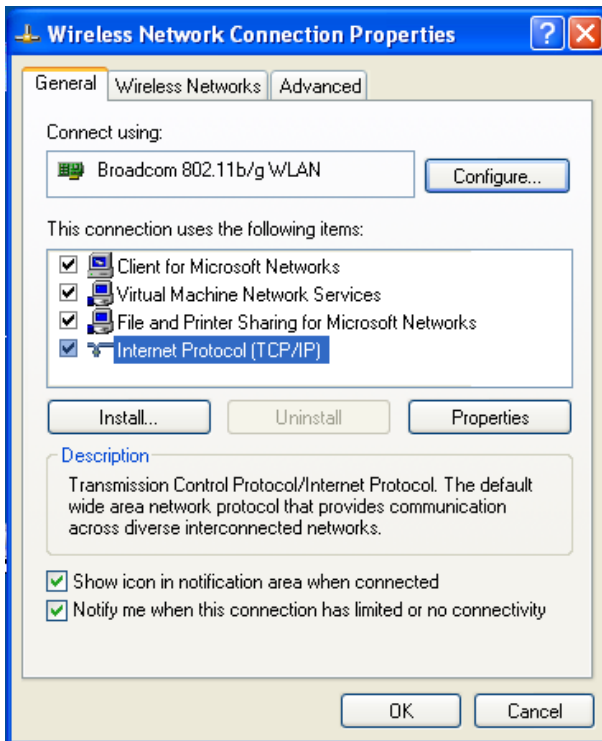
Step 4

Klik op **View Wireless Networks** Klik vervolgens op Properties



Stap5

Selecteer Internet Protocol en klik op Properties.



Stap6

Aanvinken Use the following DNS server address en voer de dns adressen in.

Preferred:200.1.159.58 Alternate: 200.2.162.14

Internet Protocol (TCP/IP) Properties

General **Alternate Configuration**

You can get IP settings assigned automatically if your network supports this capability. Otherwise, you need to ask your network administrator for the appropriate IP settings.

Obtain an IP address automatically

Use the following IP address:

IP address:

Subnet mask:

Default gateway:

Obtain DNS server address automatically

Use the following DNS server addresses:

Preferred DNS server:

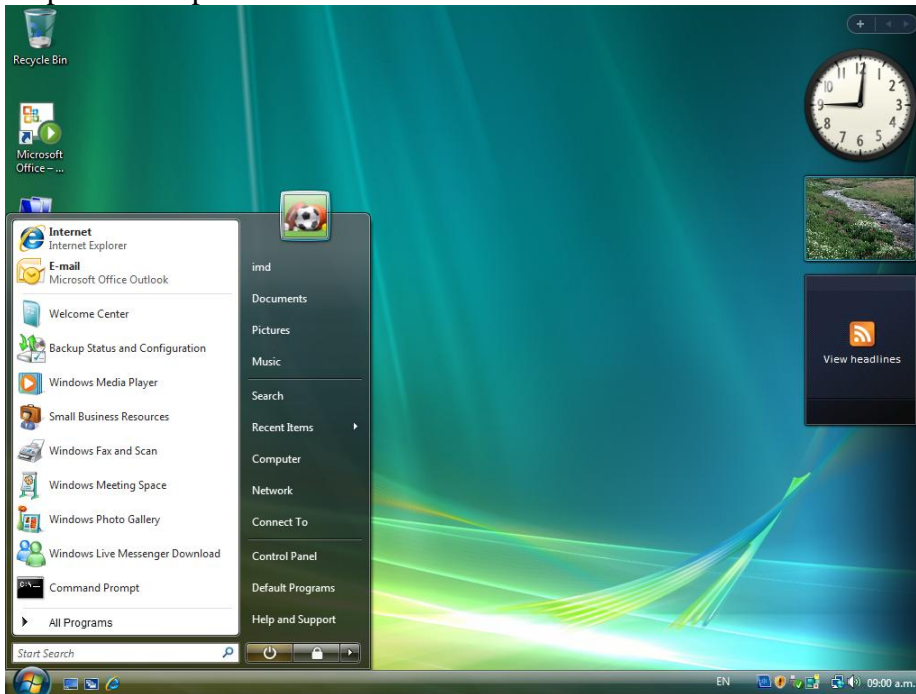
Alternate DNS server:

Advanced...

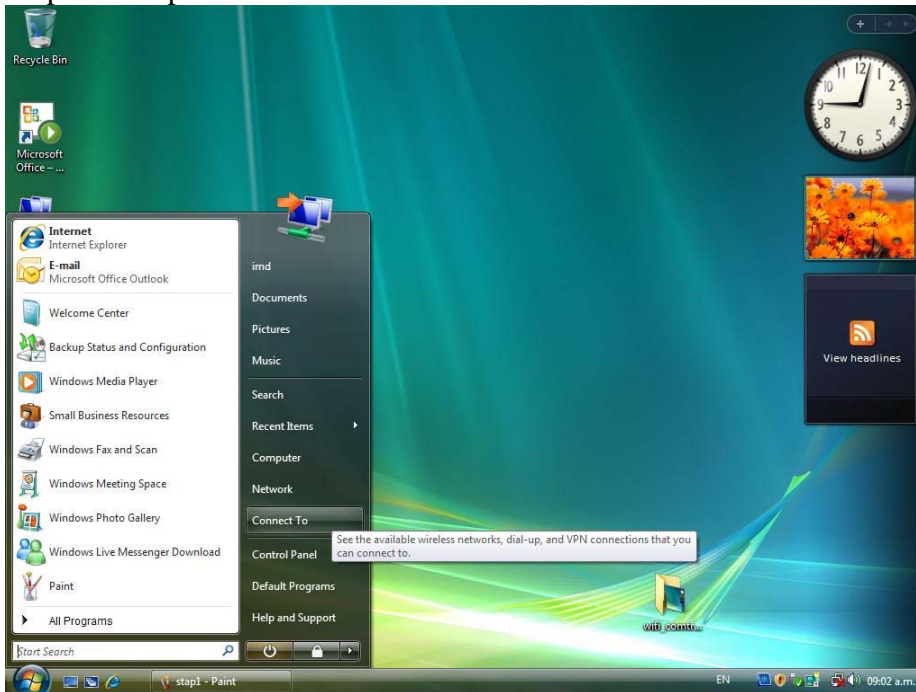
OK Cancel

Windows Vista

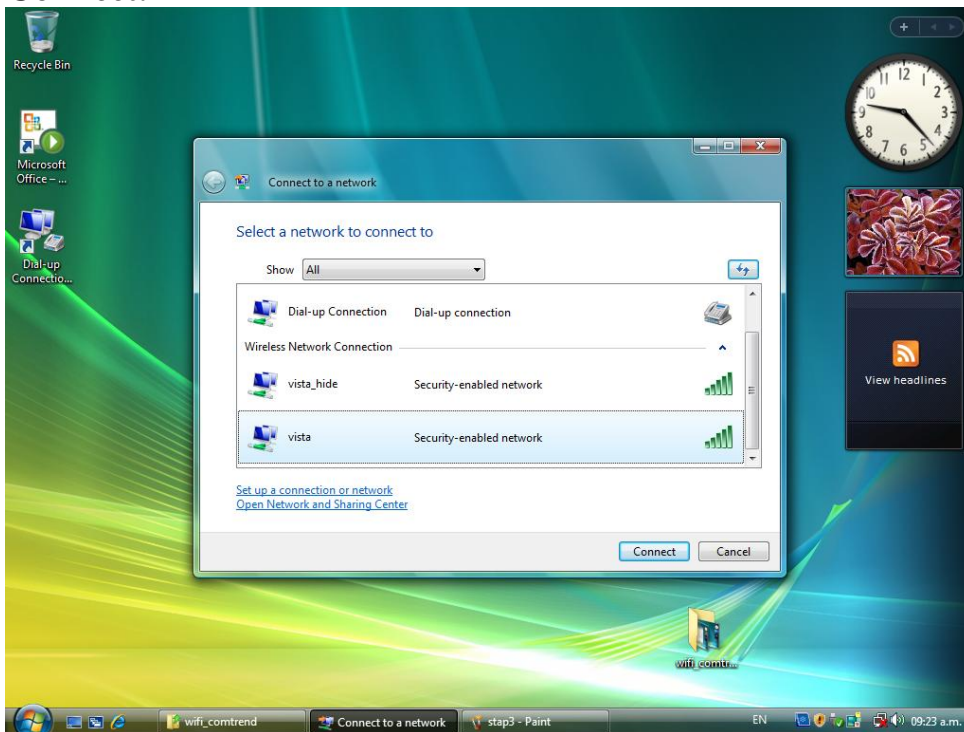
Stap 1 Klik op start



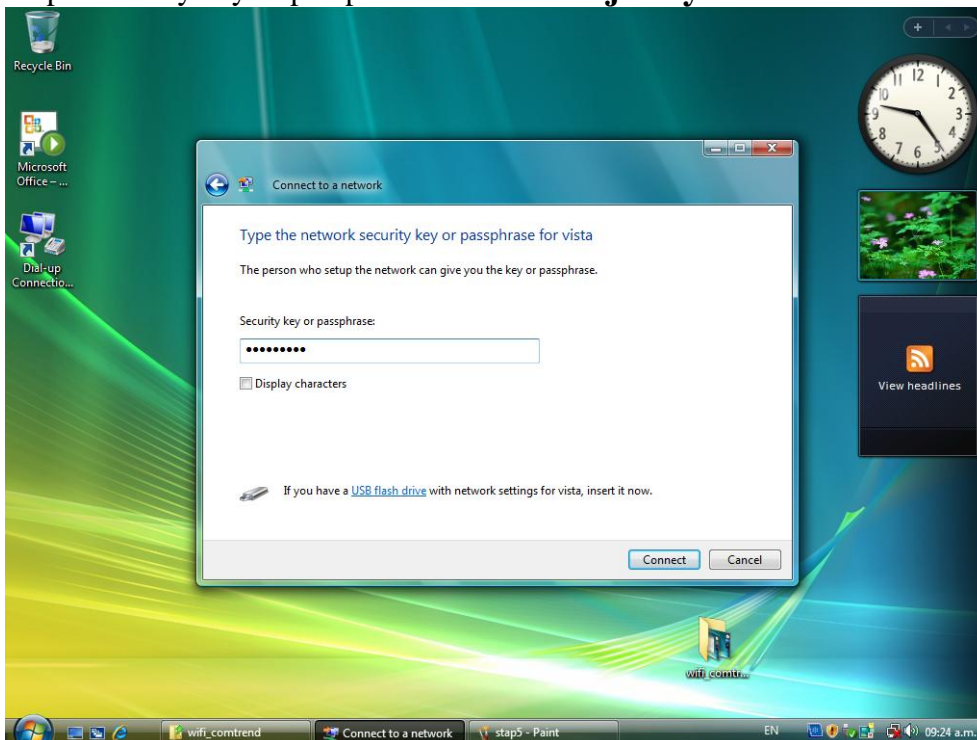
Stap2 Klik op Connect to



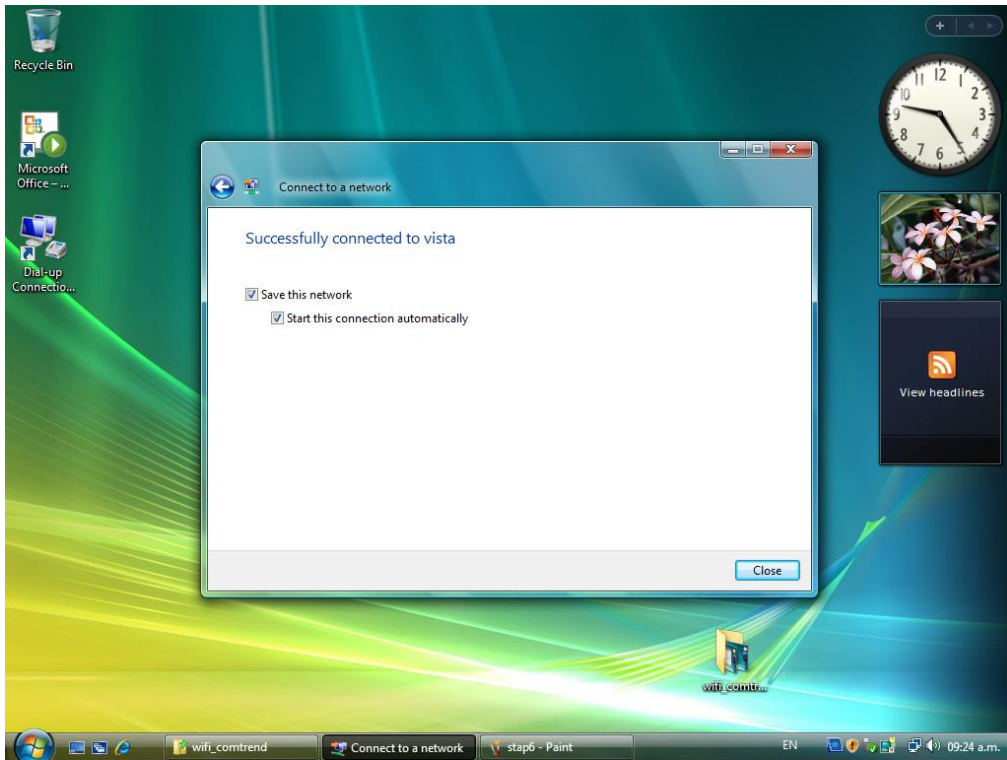
Stap3 Selecteer de opgegeven SSID in dit geval is het **vista** klik vervolgens op **Connect**.



Stap4 Security key or passphrase: **Voer hier je key in**



Stap 5 Successfully connected to **SSID** klik op close.



Stap 6 Klik close of kies een van de opties.

