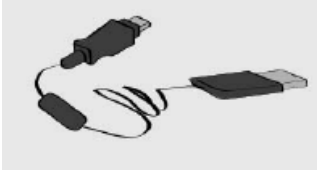




**Driver installatie voor de MV110.**

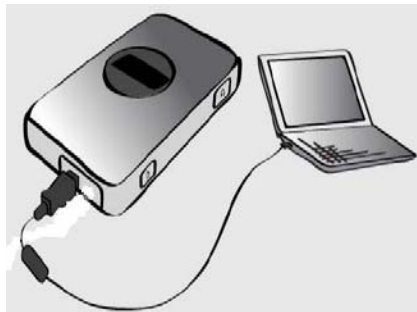
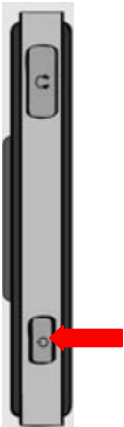
**Stap 1**

Sluit de meegeleverde USB kabel aan op de Modem.(Kleine plug)



**Stap 2**

Druk op de on/off knop terwijl u de USB kabel aansluit op uw computer.



Er gaat een nieuwe window open.



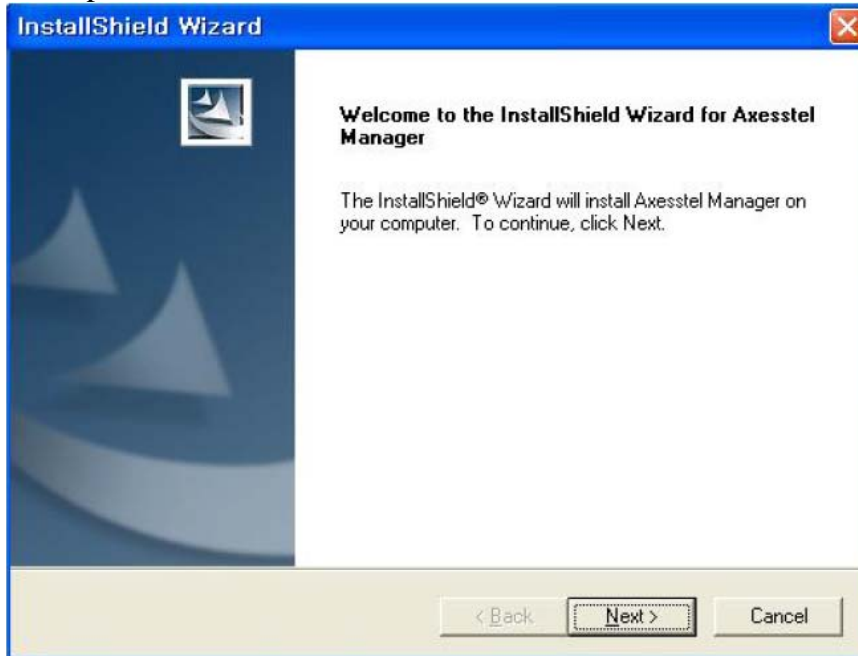
### Stap 3

Klik op “Axesstel Manager Setup.exe”



### Stap 4

Klik op “Next”



### Stap 5

Klik “next”



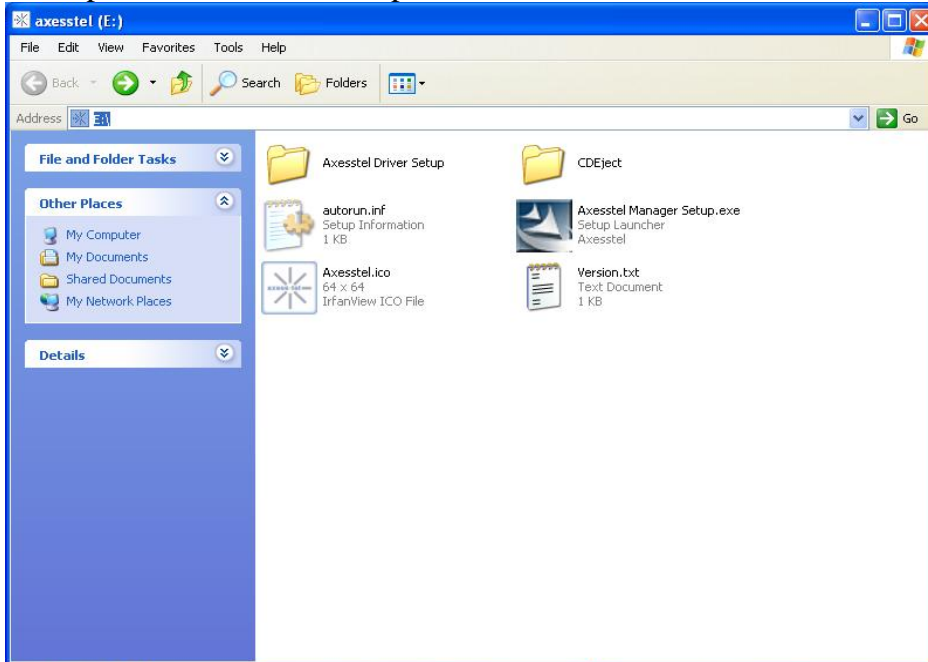
## Step 6

Klik "Finish"



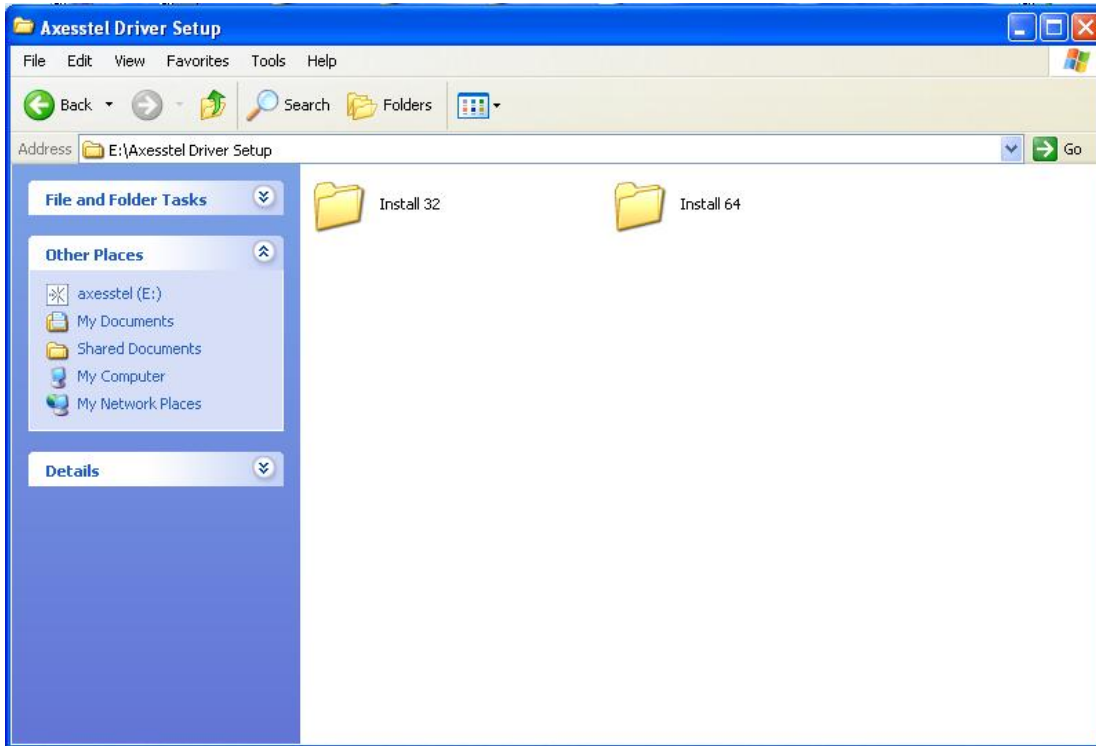
## Step 7

Klik op "Axesstel Driver Setup"



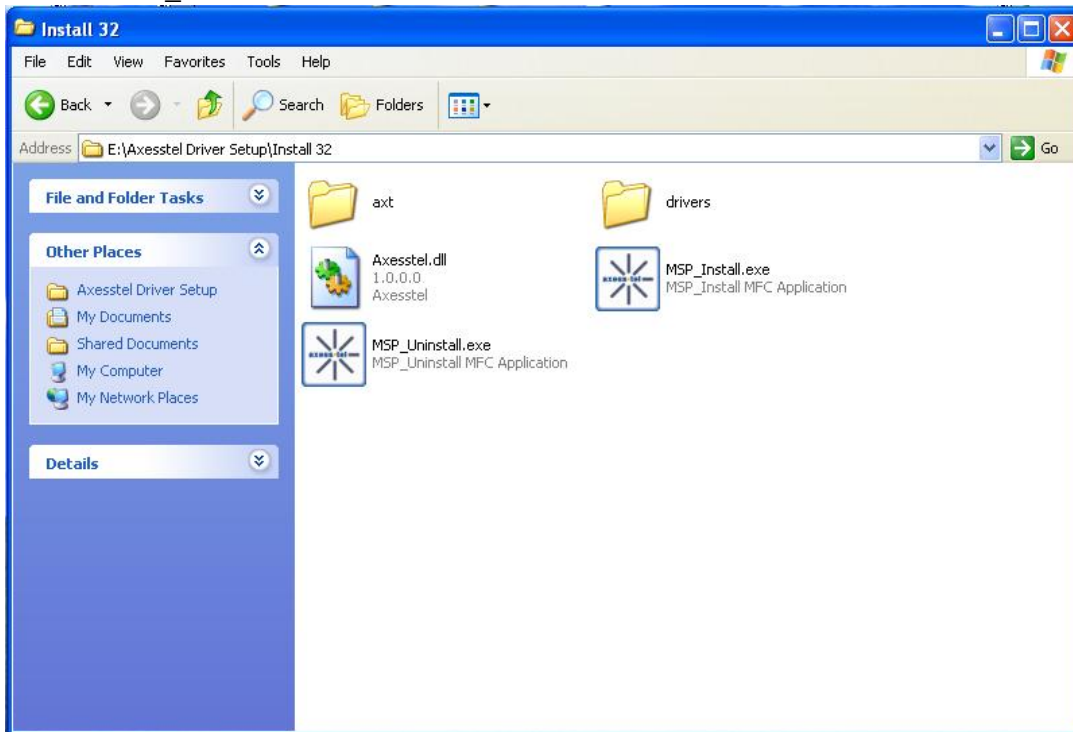
## Step 8

Klik "Install 32"

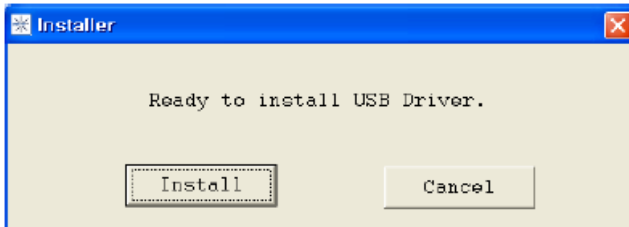


## Step 9

Klik "MSP\_Install.exe"



**Stap 10**  
Klik "Install"



**Stap 11**  
Klik "Ok"



**Stap 12**  
Kies "Install the software automatically"  
En daarna "next"



### Step 13

Klik “Continue Anyway”



### Step 14

Klik “Finish”



## Step 15

Kies “Install the software automatically”

En daarna “next”



## Step 16

Klik “Continue Anyway”





**Stap 17**  
Klik "Finish"



**Driver installatie is nu compleet.**

**Configureer nu de "Axesstel Manager" om de Internet verbinding tot stand te brengen.**

**Stap1**

Via de desktop kies het icon "Axesstel Manager"



## Stap 2

Klik op het “options icon”



## Stap 3

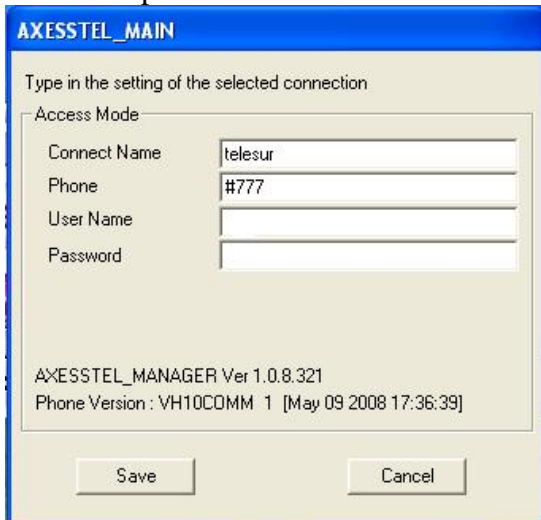
Voer in:

Connect Name : Telesur

Phone : #777

En de door Telesur afgegeven username en password.

Klik dan op “Save”



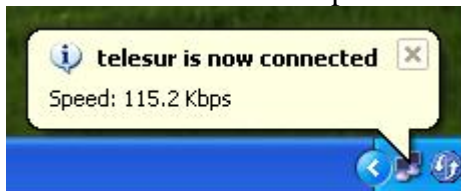
## Verbinding maken

### Stap 1

Klik op “Connect to Internet”



Er komt een icon onder op uw taakbalk “**U heeft nu INTERNET verbinding**”.



## Verbinding verbreken

Klik op “ Disconnect from internet”.



Klik op “ X ” om de Axesstel Manager af te sluiten

