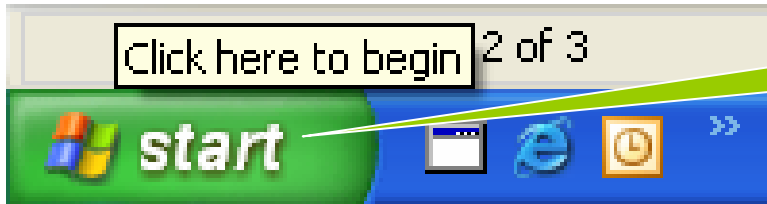


Email configuratie sr.net

# Microsoft-Outlook

Nieuw



1 Klik start.



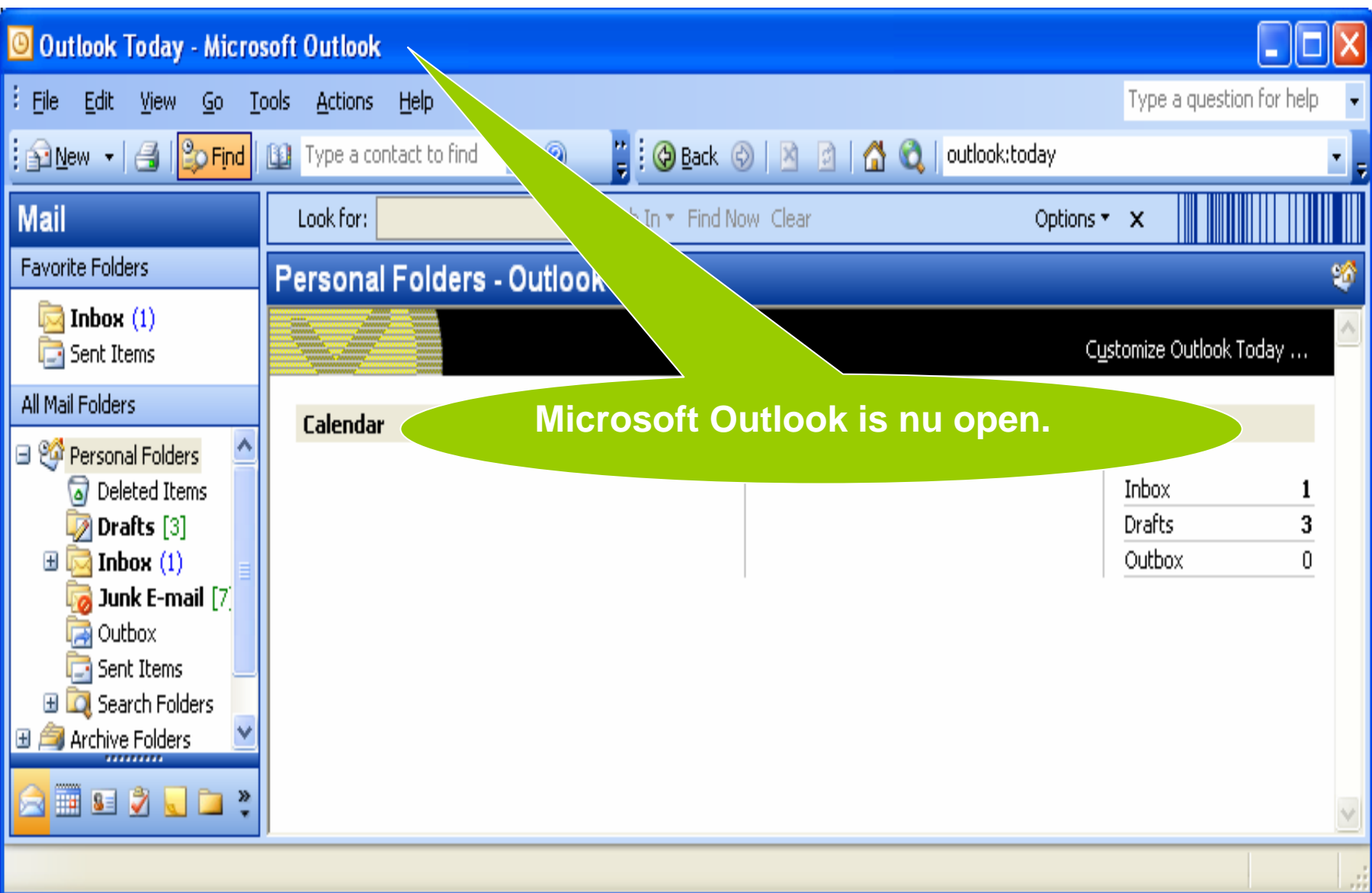
2 Klik All Programs.



3 Klik Microsoft Office

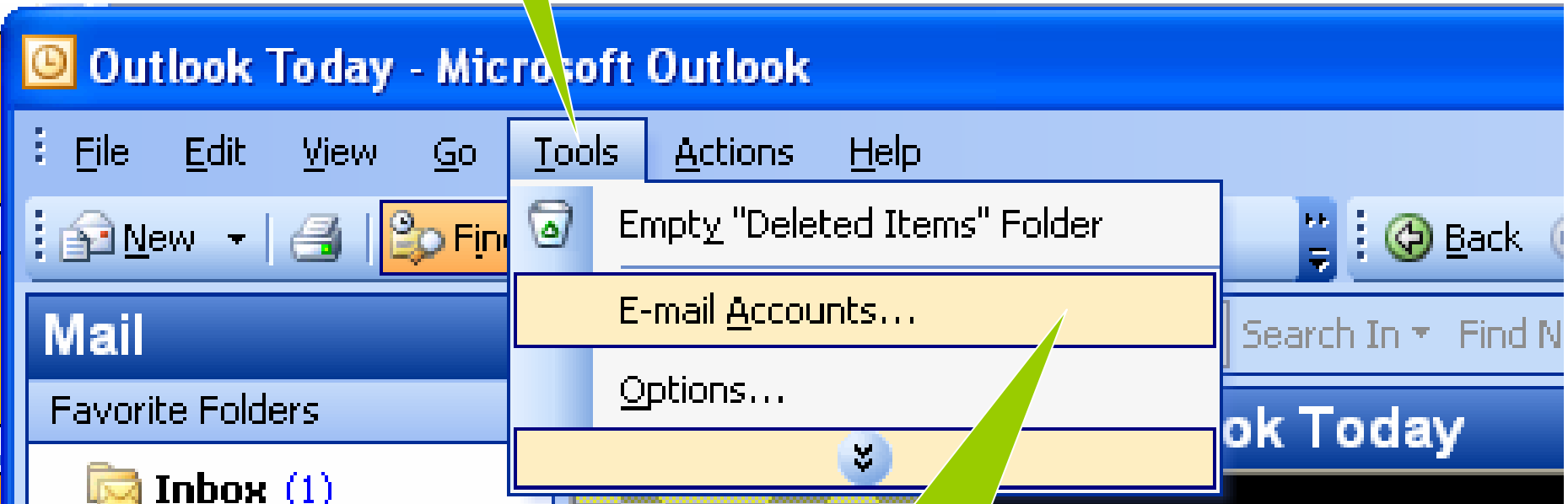


4 Klik Microsoft Office Outlook



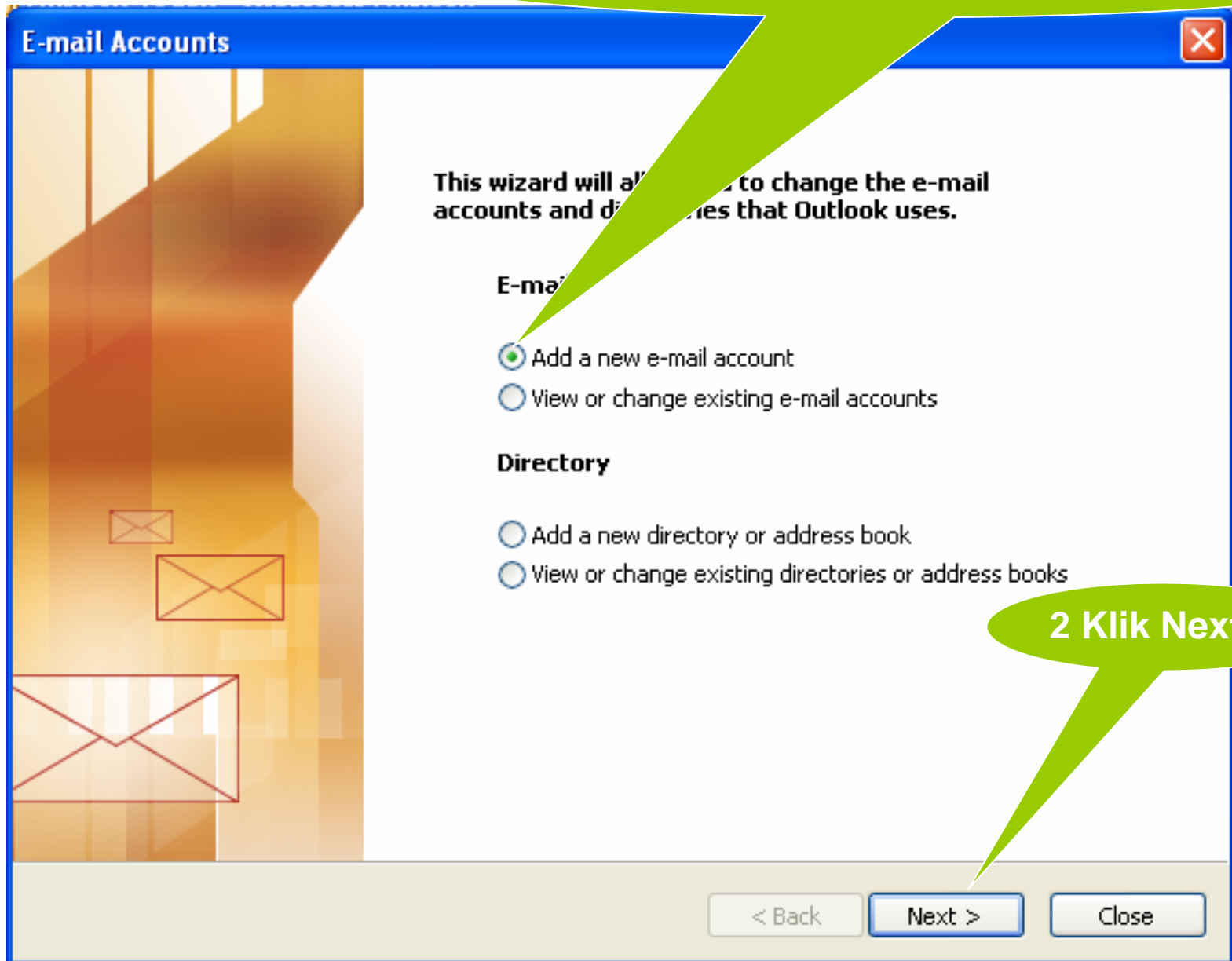
Microsoft Outlook is nu open.

1 Klik op



2 Klik op E-mail Accounts

1 Selecter Add a new email account



2 Klik Next

1 Selecteer POP3

**Server Type**

You can choose the type of server your new e-mail account will work with.

- Microsoft Exchange Server**  
Connect to an Exchange server to read e-mail, access public folders, and share documents.
- POP3**  
Connect to a POP3 e-mail server to download your e-mail.
- IMAP**  
Connect to an IMAP e-mail server to download e-mail and synchronize mailbox folders.
- HTTP**  
Connect to an HTTP e-mail server such as Hotmail to download e-mail and synchronize mailbox folders.
- Additional Server Types**  
Connect to another workgroup or 3rd-party mail server.

2 Klik Next

< Back

Next >

Cancel

# E-mail Accounts



1 Voer uw naam

2 Voer uw emailadres in: v.b.  
email@sr.net

## User Information

Your Name: mijnnaam

E-mail Address: email@sr.net

## Server Information

Incoming mail server (POP3): mail.sr.net

Outgoing mail server (SMTP): mail.sr.net

## Logon Information

User Name: email@sr.net

Password: \*\*\*\*\*

Remember password

Log on using Secure Password Authentication (SPA)

3 voer in het  
opgegeven  
Password

## Test Settings

After filling out the information on this screen, we recommend you test your account by clicking the Test Account Settings button below. (Requires network connectivity.)

Test Account Settings ...

4 Voer de mailservers in  
mail.sr.net

< Back

Next >

Cancel

## E-mail Accounts



### Internet E-mail Settings (POP3)

Each of these settings are required to get your e-mail account working.



#### User Information

Your Name:

E-mail Address:

#### Server Information

Incoming mail server (POP3):

Outgoing mail server (SMTP):

#### Logon Information

User Name:

Password:

Remember password

Log on using Secure Password Authentication (SPA)

#### Test Settings

After filling in the recommended settings, click the Test Account Settings button below. (Requires network connection)

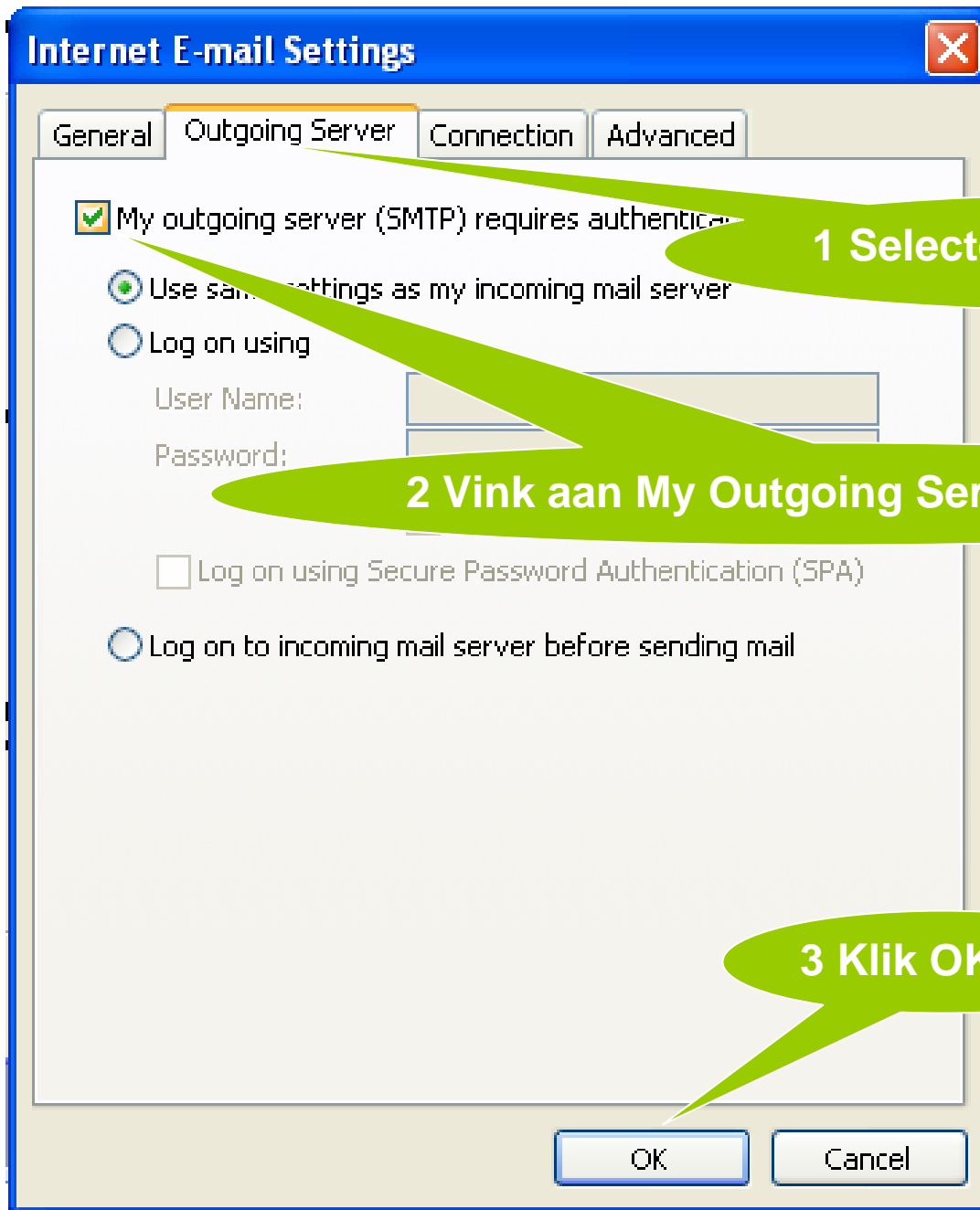
1 Klik More Settings

< Back

Next >

Cancel





1 Selecteer Outgoing Server

2 Vink aan My Outgoing Server(SMTP)

3 Klik OK

## E-mail Accounts



### Internet E-mail Settings (POP3)

Each of these settings are required to get your e-mail account working.



#### User Information

Your Name:

E-mail Address:

#### Server Information

Incoming mail server (POP3):

Outgoing mail server (SMTP):

#### Logon Information

User Name:

Password:

Remember password

Log on using Secure Password Authentication (SPA)

#### Test Settings

After filling out the information on this screen, we recommend you test your account by clicking the button below. (Requires network connection)

1 Klik Next



### Congratulations!

You have successfully entered all the information required to setup your account.

To close the wizard, click Finish.

1 Klik Finish

< Back

Finish