

Email configuratie sr.net

Outlook Express

nieuw

1 Klik start.

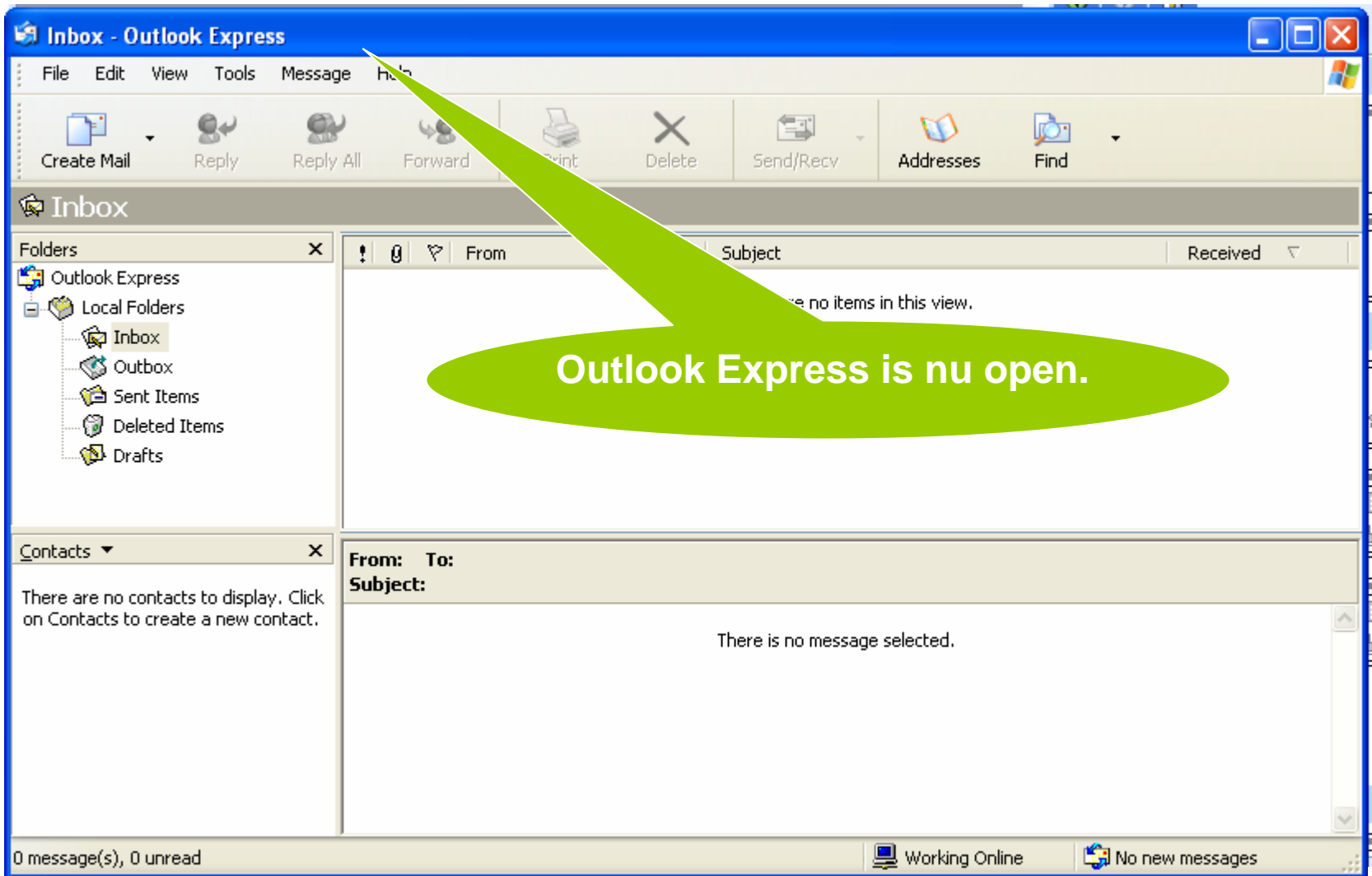


2 Klik All Programs.

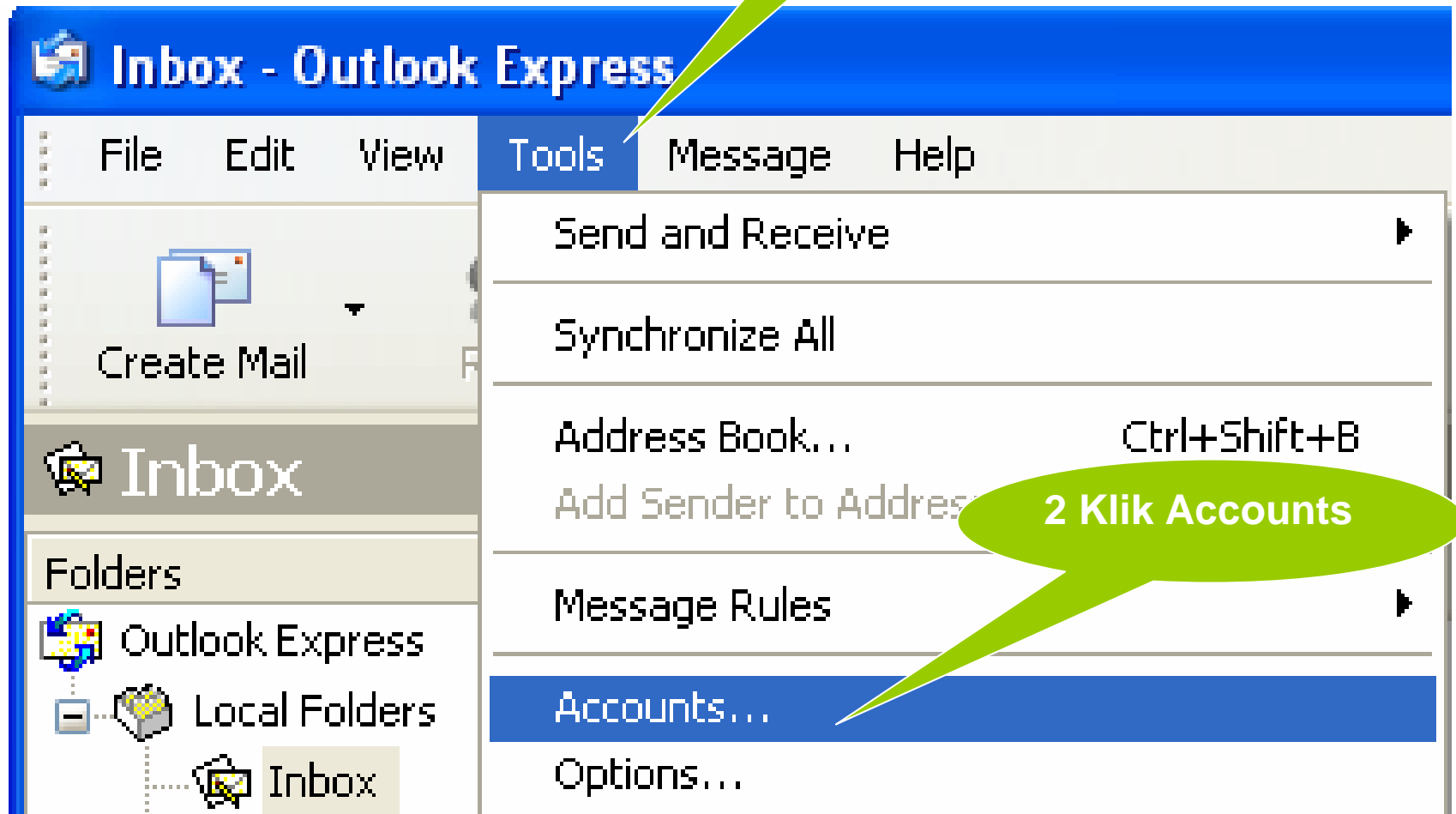


3 Klik Outlook Express.



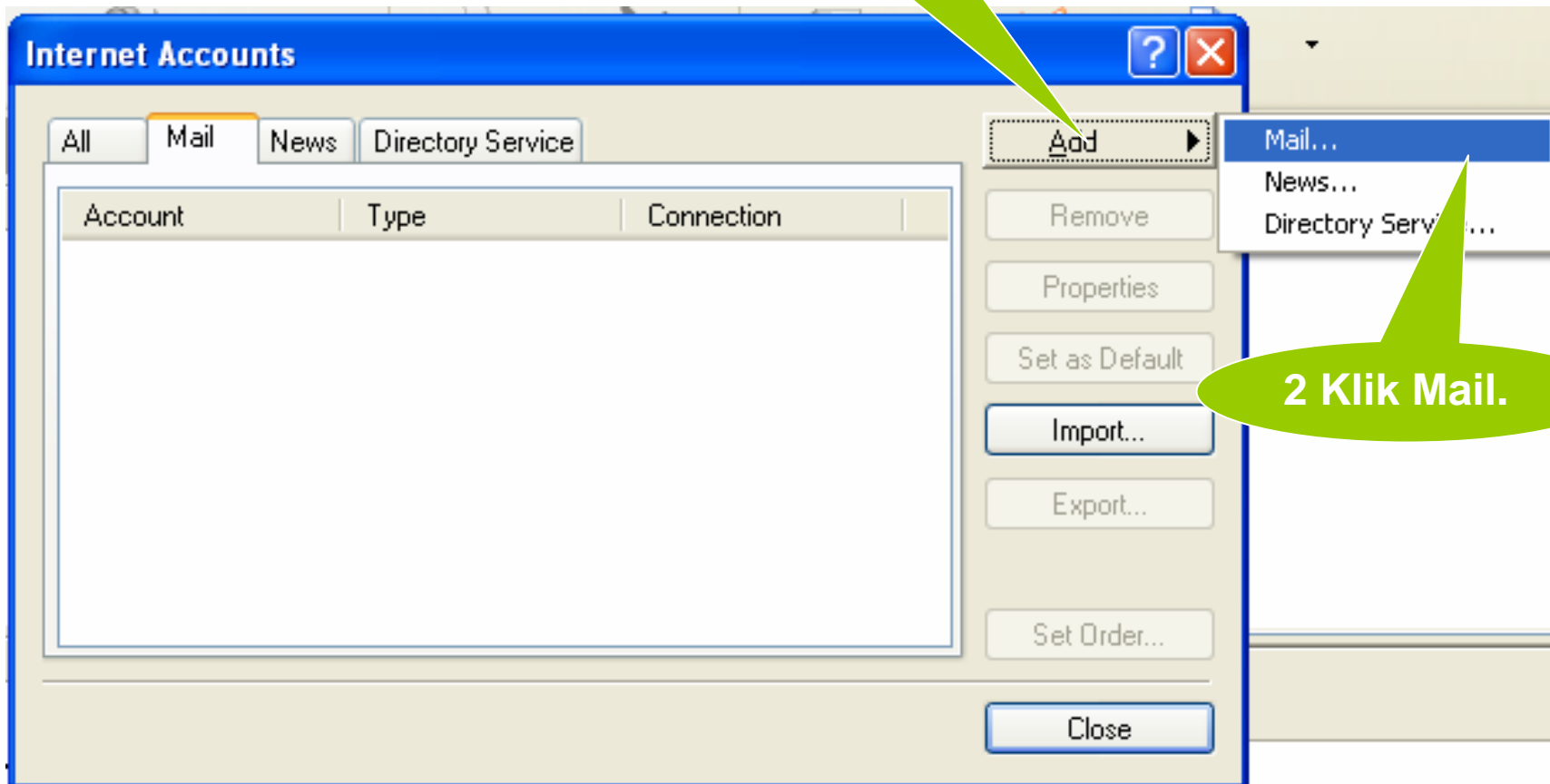


1 Klik Tools



2 Klik Accounts

1 Klik Add.



2 Klik Mail.

Internet Connection Wizard [X]

Your Name [Help Icon]

When you send e-mail, your name will appear in the From field of the outgoing message.
Type your name as you would like it to appear.

Display name:

For example: John Smith

< Back Next > Cancel

1 Voer uw naam in.

2 Klik Next

Internet Connection Wizard

Internet E-mail Address

Your e-mail address is the address other people use to send e-mail messages to you.

E-mail address:

For example: someone@microsoft.com

1 Voer hier uw emailadres in.
v.b email@sr.net

2 Klik Next

< Back

Next >

Cancel

Internet Connection Wizard



E-mail Server Names



My incoming mail server is a server.

1 voer in **mail.sr.net**

Incoming mail (POP3, IMAP or HTTP) server:

2 voer in **mail.sr.net**

An SMTP server is the server that is used for your outgoing e-mail.

Outgoing mail (SMTP) server:

3 Klik Next

< Back

Next >

Cancel

Internet Connection Wizard



Internet Mail Logon



Type the account name and password used by your Internet service provider has given you.

Account name:

Password:

Remember password

If your Internet service provider requires you to use Secure Password Authentication (SPA) to access your mail account, select 'Log on using Secure Password Authentication (SPA)' check box.

Log on using Secure Password Authentication (SPA)

1 Voer hier uw emailadres in.
v.b email@sr.net

2 voer in opgegeven Password

3 Klik Next

< Back

Next >

Cancel

Internet Connection Wizard



Congratulations



You have successfully entered all of the information required to set up your account.

To save these settings, click Finish.

Klik Finish

< Back

Finish

Cancel