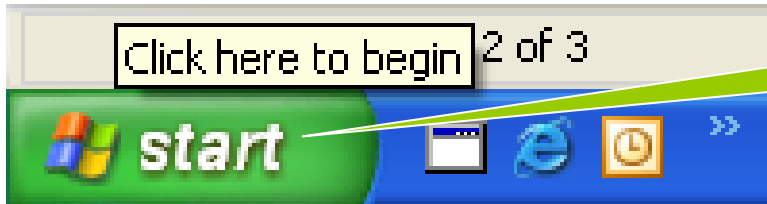


Email configuratie sr.net

# Microsoft-Outlook

Migratie



1 Klik start.



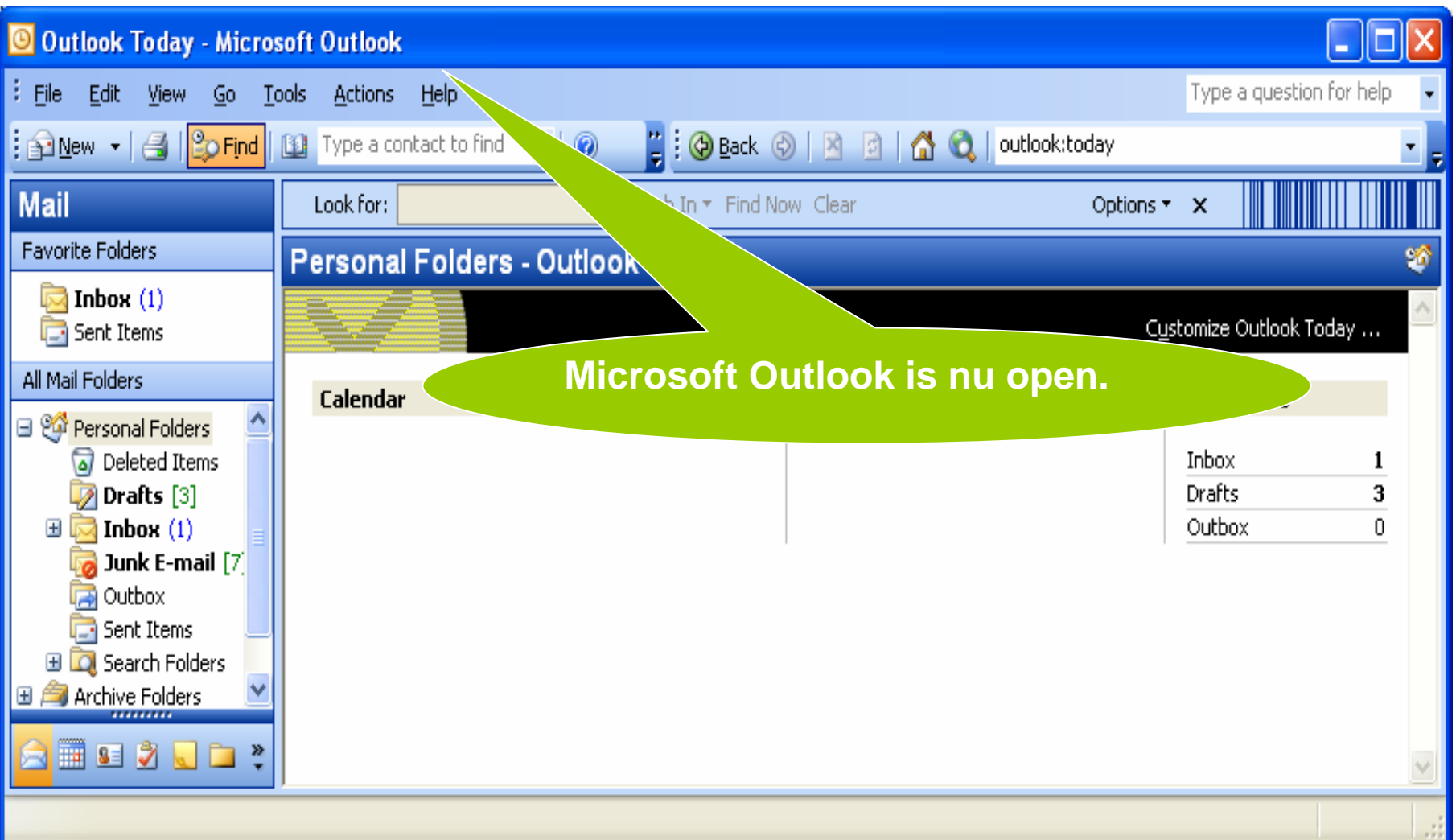
2 Klik All Programs.



3 Klik Microsoft Office

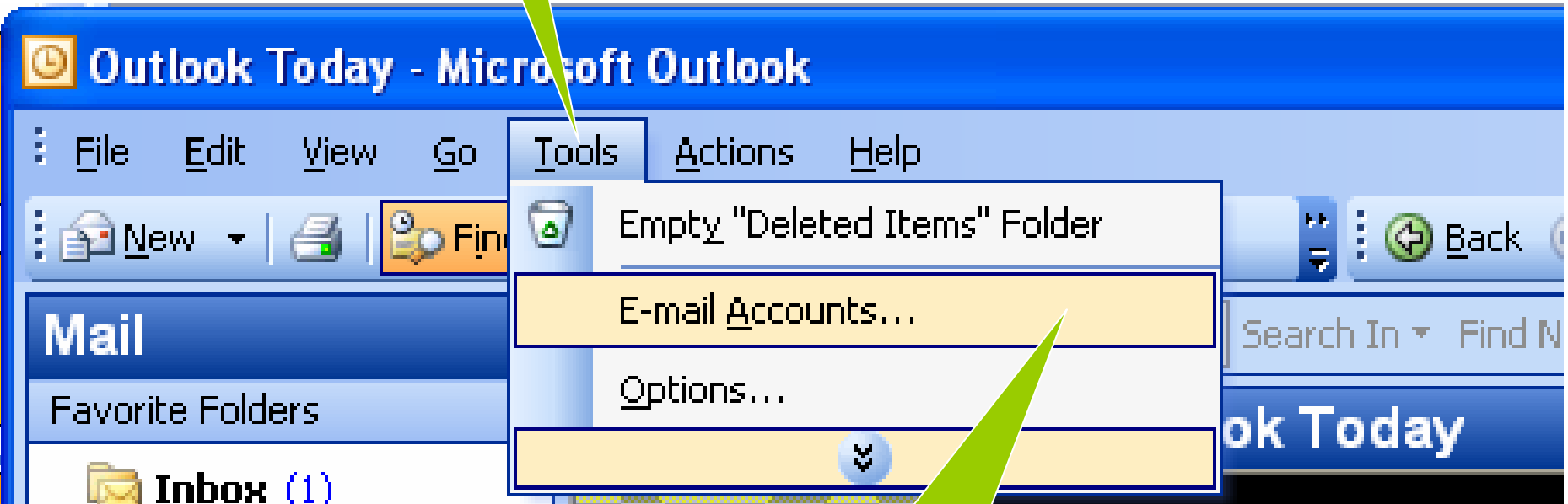


4 Klik Microsoft Office Outlook



Microsoft Outlook is nu open.

1 Klik op



2 Klik op E-mail Accounts



This wizard will allow you to change the e-mail accounts and directories that Outlook uses.

1 Aanvinken

**E-mail**

- Add a new e-mail account
- View or change existing e-mail accounts

**Directory**

- Add a new directory or address book
- View or change existing directories or address books

2 Next

< Back

Next >

Close

## E-mail Accounts



### E-mail Accounts

You can select an account and change its settings or remove it.



Outlook processes e-mail for these accounts in the following order:

Name	Type
pop3.sk.net	POP/SMTP (Default)

1 Selecteer

Change...

Add...

Remove

Set as Def...

Move Up

Move Down

2 Klik Change

Deliver new e-mail to the following location:

Personal Folders

New Outlook Data File...

< Back

Finish

Cancel

## E-mail Accounts



### Internet E-mail Settings (POP3)

Each of these settings are required to get your e-mail account working.



#### User Information

Your Name:

E-mail Address:

#### Server Information

Incoming mail server (POP3):

Outgoing mail server (SMTP):

#### Logon Information

User Name:

Password:

Remember password

Log on using Secure Password Authentication (SPA)

#### Test Settings

After filling out the information, we recommend you test your settings by clicking the Test Account Settings button below. (Requires Internet connection)

2 Voer hier uw  
emailadres in v.b  
email@sr.net

1 verander beide  
mail servers naar :  
mail.sr.net

## E-mail Accounts



### Internet E-mail Settings (POP3)

Each of these settings are required to get your e-mail account working.



#### User Information

Your Name:

E-mail Address:

#### Server Information

Incoming mail server (POP3):

Outgoing mail server (SMTP):

#### Logon Information

User Name:

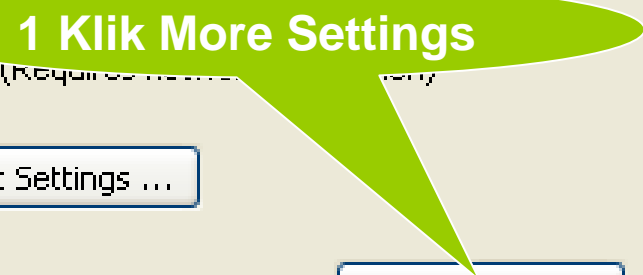
Password:

Remember password

Log on using Secure Password Authentication (SPA)

#### Test Settings

After filling out the information above, we recommend you click the Test Account Settings button below. (Requires Internet connectivity.)



< Back

Next >

Cancel



## Internet E-mail Settings



General

Outgoing Server

Connection

Advanced

Mail Account

Type the name by which you would like to refer to this account. For example: "Work" or "Microsoft Mail Server"

pop3.sr.net

Other User Information

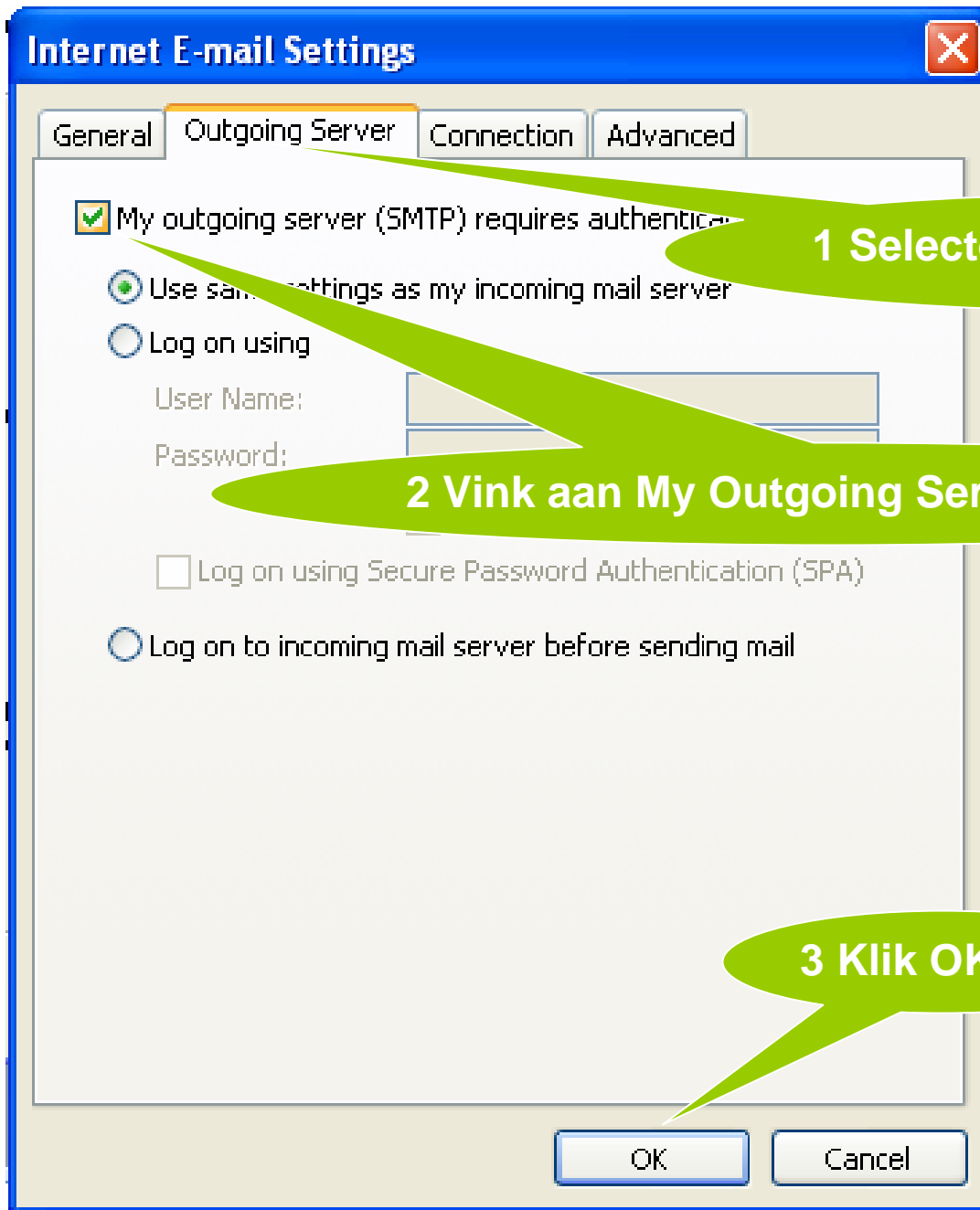
Organization:

Reply E-mail:

**1 Wijzig dit naar : mail.sr.net**

OK

Cancel



1 Selecteer Outgoing Server

2 Vink aan My Outgoing Server(SMTP)

3 Klik OK

## E-mail Accounts



### Internet E-mail Settings (POP3)

Each of these settings are required to get your e-mail account working.



#### User Information

Your Name:

E-mail Address:

#### Server Information

Incoming mail server (POP3):

Outgoing mail server (SMTP):

#### Logon Information

User Name:

Password:

Remember password

Log on using Secure Password Authentication (SPA)

#### Test Settings

After filling out the information on this screen, we recommend you test your account by clicking the button below. (Requires network connection)

Test Account Settings ...

More Settings ...

1 Klik Next

< Back

Next >

Cancel



## Congratulations!

You have successfully entered all the information required to setup your account.

To close the wizard, click Finish.

1 Klik Finish

< Back

Finish