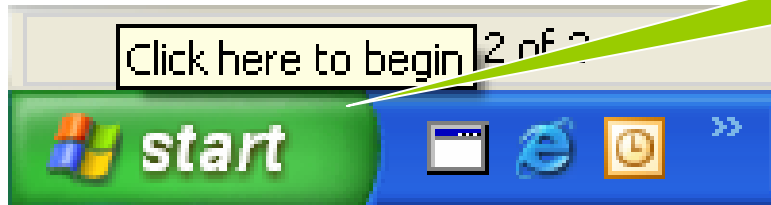


Email configuratie sr.net

Outlook Express

Migratie

1 Klik start.

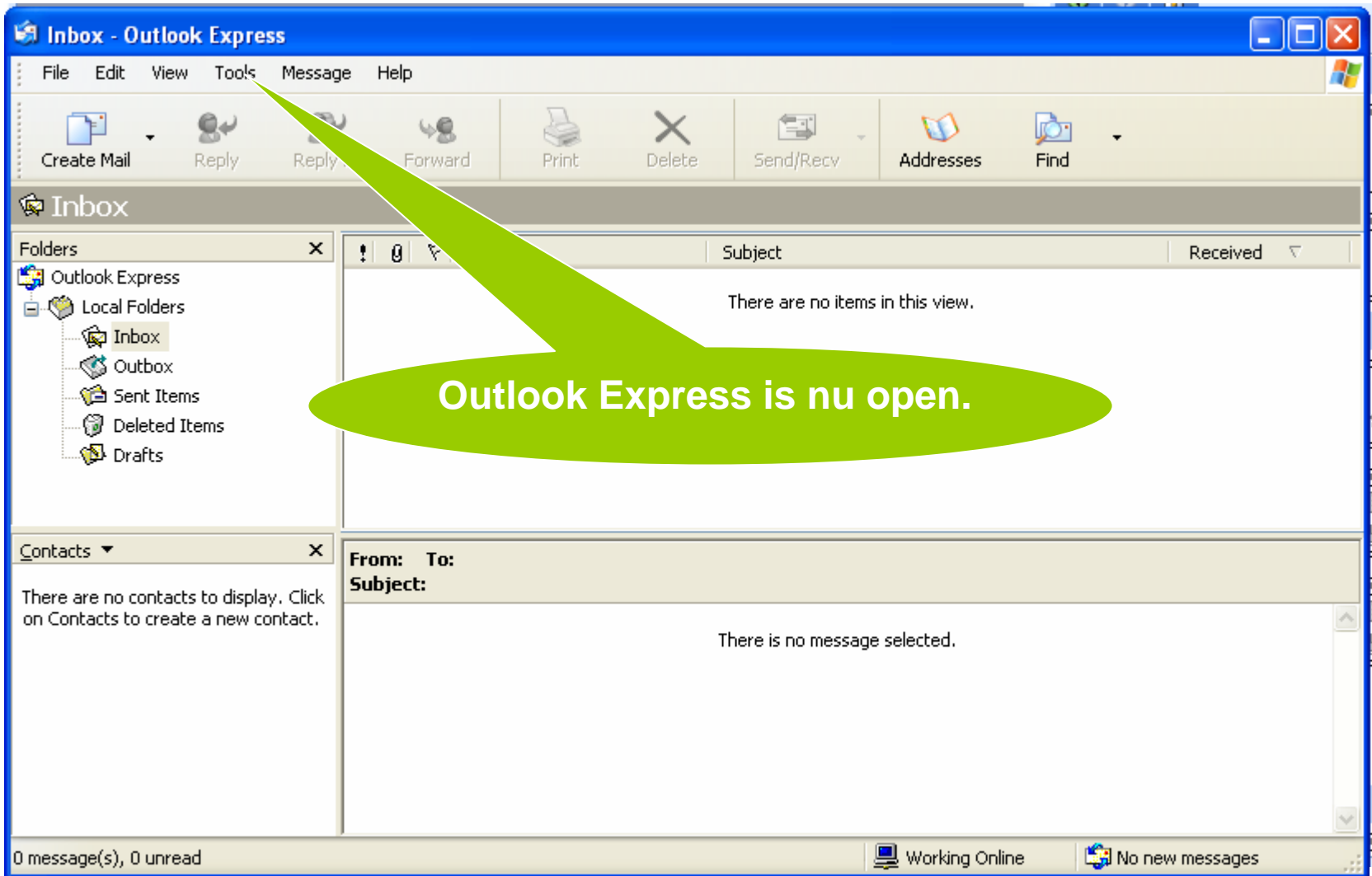


2 Klik All Programs.

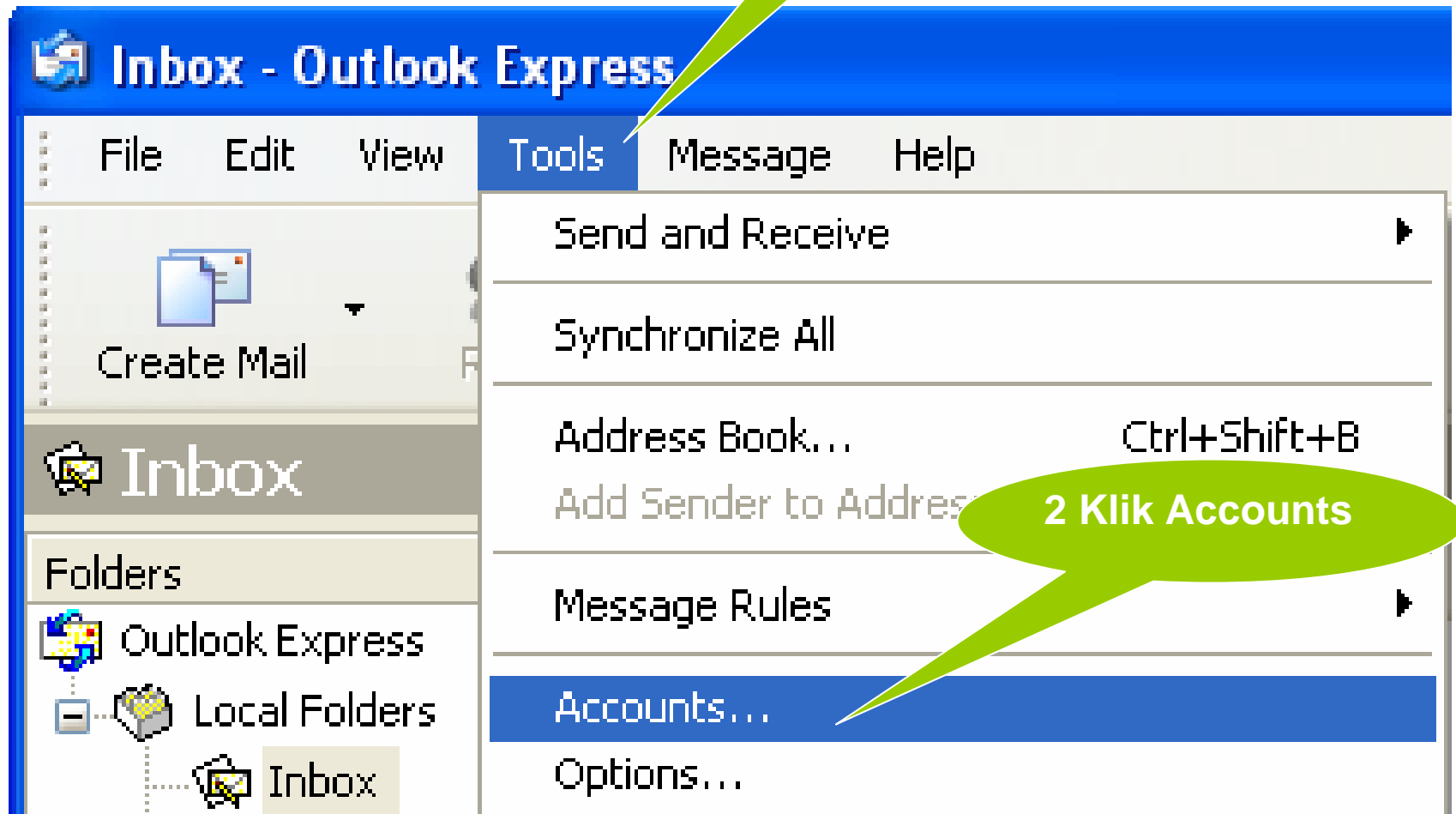


3 Klik Outlook Express.






1 Klik Tools



2 Klik Accounts

Internet Accounts

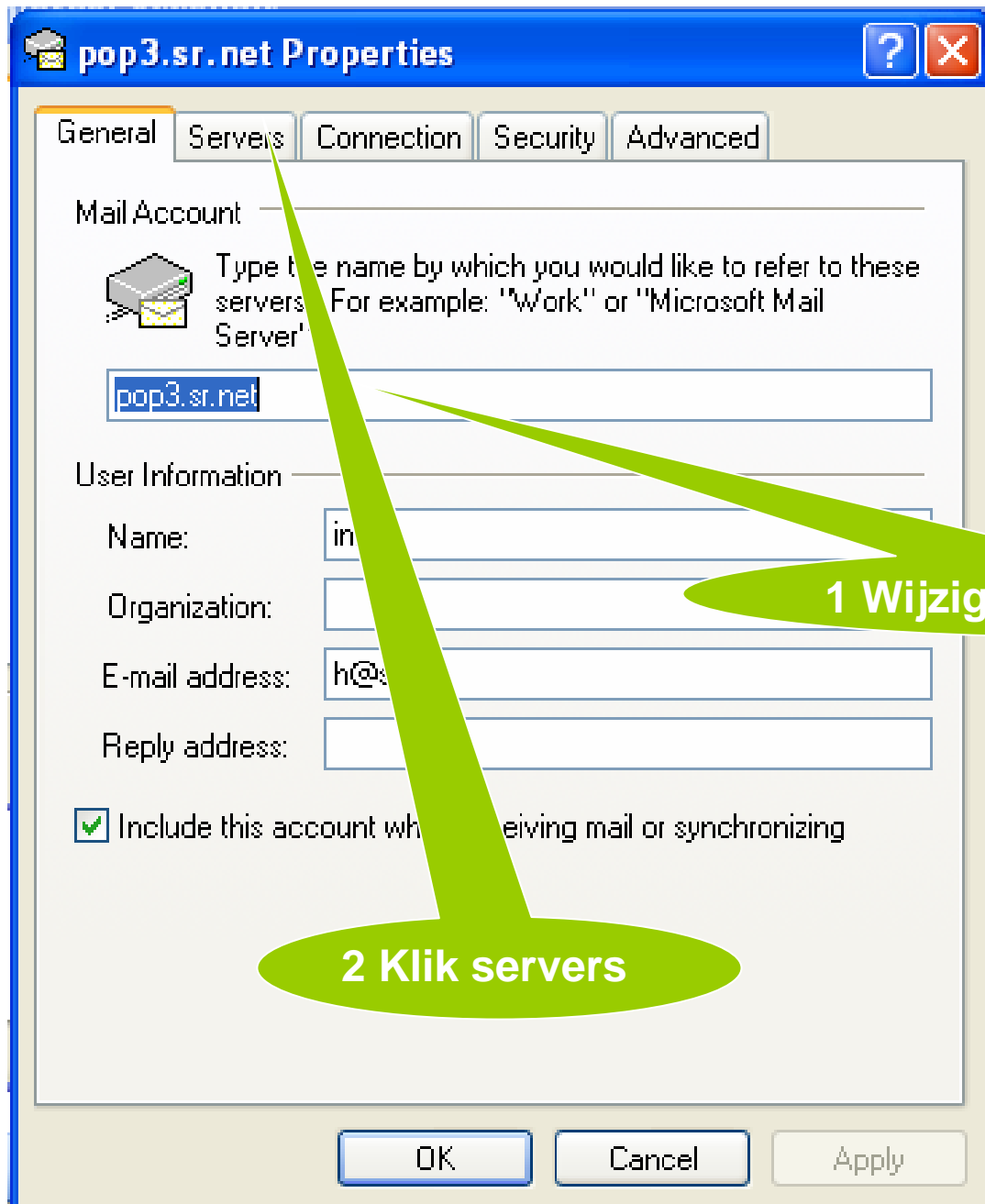
All Mail News Directory Service

Account	Type	Connection
 pop3.sr.net	mail (default)	Any Available

- Add
- Remove
- Properties
- Set as Default
- Import...
- Export...
- Set Order...
- Close

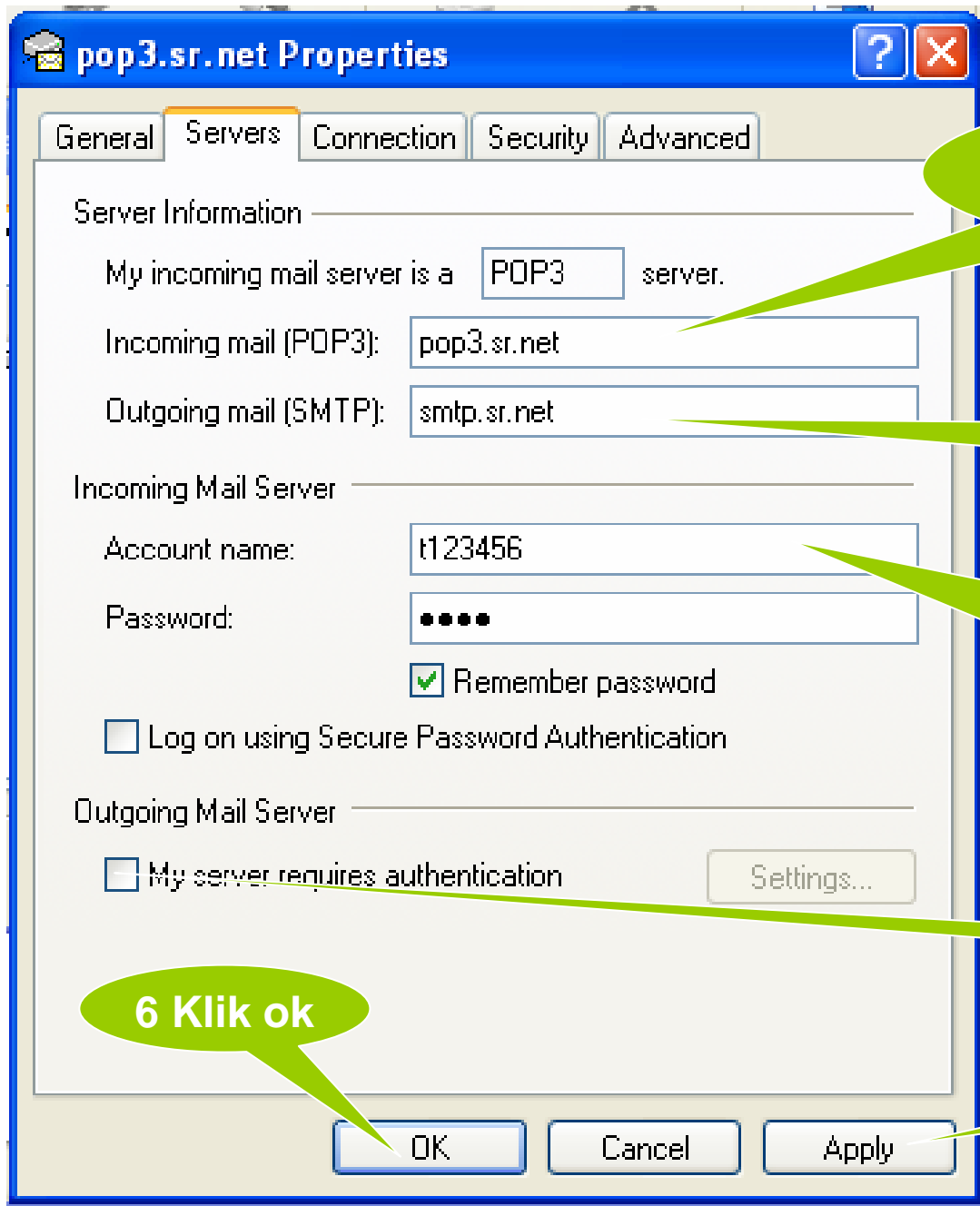
1 Klik pop3.sr.net

2 Klik Properties



1 Wijzig dit naar mail.sr.net

2 Klik servers



1 Wijzig dit naar
mail.sr.net

2 Wijzig dit naar
mail.sr.net

3 Voer hier uw
emailadres in
v.b: email@sr.net

4 Aanvinken

5 Klik Apply

6 Klik ok

Internet Accounts



All Mail News Directory Service

Add

Remove

Properties


Set as Default

Import...

Export...

Set Order...

Close

Account	Type	Connection
 mail.sr.net	mail (default)	Any Available

Klik Close